

BROOKEVILLE FARMS NEWS Spring, 2023

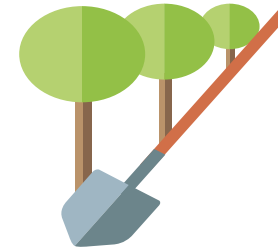
The Best Place in the World to Live!

SPRING CLEAN-UP EVENT

MARCH 25TH
8:30-10:30

COME OUT AND JOIN US FOR A SPRING CLEAN UP TO KEEP OUR BEAUTIFUL NEIGHBORHOOD CLEAN.

GET OUT YOUR GARDEN GLOVES AND MEET AT THE CORNER OF RIGS HILL WAY AND BORDLY TO PICK UP A BAG. WE'LL DIVIDE UP FROM THERE.



Brookeville Bypass Update

According to the Maryland DOT website, "The previously communicated estimated completion date for the project was year-end 2022. The new estimated completion date is late summer 2023."

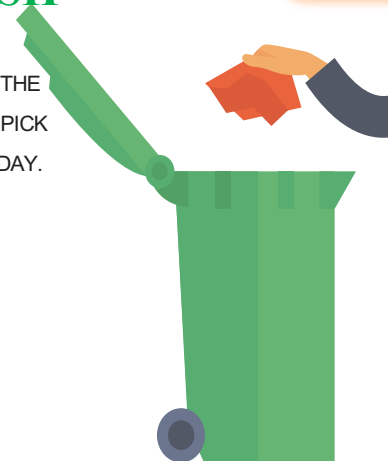


Fun Fact:
In 1880, Brookeville was the 3rd most populous town in Montgomery County

HOLIDAY TRASH SCHEDULE

TRASH WILL NOT BE PICKED UP ON THE FOLLOWING HOLIDAYS THIS YEAR. PICK UP WILL BE THE NEXT SCHEDULED DAY.

MEMORIAL DAY
4TH OF JULY
LABOR DAY
THANKSGIVING
CHRISTMAS



VOTE!

ANNUAL HOA MEETING & ELECTION

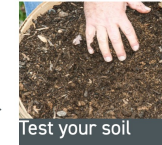
MAKE YOUR OPINION COUNT (AND HAVE A BEER WITH YOUR NEIGHBORS)

ANNUAL HOA MEETING
BROOKEVILLE BEER FARM
MARCH 21, 2023
7-8

MARCH Yard & Garden Tips & Tasks

Food Garden

- If you haven't tested the soil in your vegetable garden in 3 or more years, test your soil & mix 1 inch of compost into your beds.
- Cut back last year's herb plants to make room for new growth.



Test your soil

Indoor Plants

- Start fertilizing your indoor plants if you haven't already!
- Repot & divide indoor plants using lightweight, well-drained soilless potting mixes.



Repot indoor plants

Trees, Shrubs, & Flowers

- Begin planting trees & shrubs now.
- Cut old perennial flower stalks to varying heights between 8 to 24 inches. The remaining stems provide nesting sites for native bees that pollinate plants.
- Add 1 inch of compost to beds, pull weeds & apply 2 inches of mulch to prevent weeds.



Plant trees & shrubs

Climate Resiliency Tip!

Rethink fertilizer. It takes a great deal of fossil-fuel energy to produce synthetic nitrogen fertilizers. Test your soil before using fertilizer. Switch to organic sources, leave grass clippings on the lawn to cycle nutrients, use compost on garden beds & cover crops in a vegetable garden. Natural materials add nutrients!



Leave grass clippings

Add compost to beds

UNIVERSITY OF MARYLAND EXTENSION

HOME & GARDEN INFORMATION CENTER

MASTER GARDENER

THE NOSEY NEIGHBOR

AFTER WHAT SEEMED TO BE A SLOW START, KEYSTONE CUSTOM HOMES HAS STARTED BUILDING. THEY ARE RACING THE CLOCK, IT SEEMS, AS HOUSES ARE POPPING UP OVERNIGHT! ACCORDING TO THEIR WEBSITE, ALL BUT ONE OF THEIR LOTS HAS BEEN SOLD. WELCOME TO OUR SHERWOOD PRESERVE NEIGHBORS.

